

PART OF THE NW. 1/4, OF SECTION 22, & SW 1/4 OF SECTION 15, T.7N., R.1E., S.L.B. & M.

376

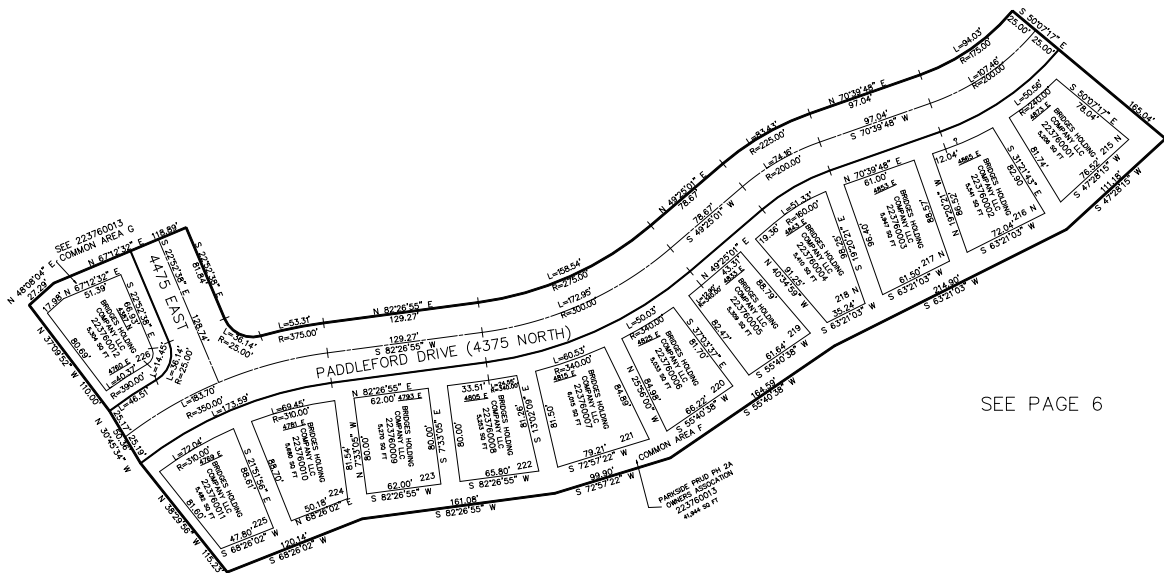
## PARKSIDE PRUD PHASE 2A

IN WEBER COUNTY

TAXING UNIT: 203

SCALE 1" = 80'

SEE PAGE 6



SEE PAGE 6

SEE PAGE 17

10' UTILITY & DRAINAGE EASEMENTS EACH  
SIDE OF PROPERTY LINES AS INDICATED  
BY DASHED LINES EXCEPT AS OTHERWISE  
SHOWN.

FOR COMPLETE ENG DATA SEE  
ORIGINAL DEDICATION PLAT IN  
BOOK 87, PAGE 77-78 OF RECORDS.